

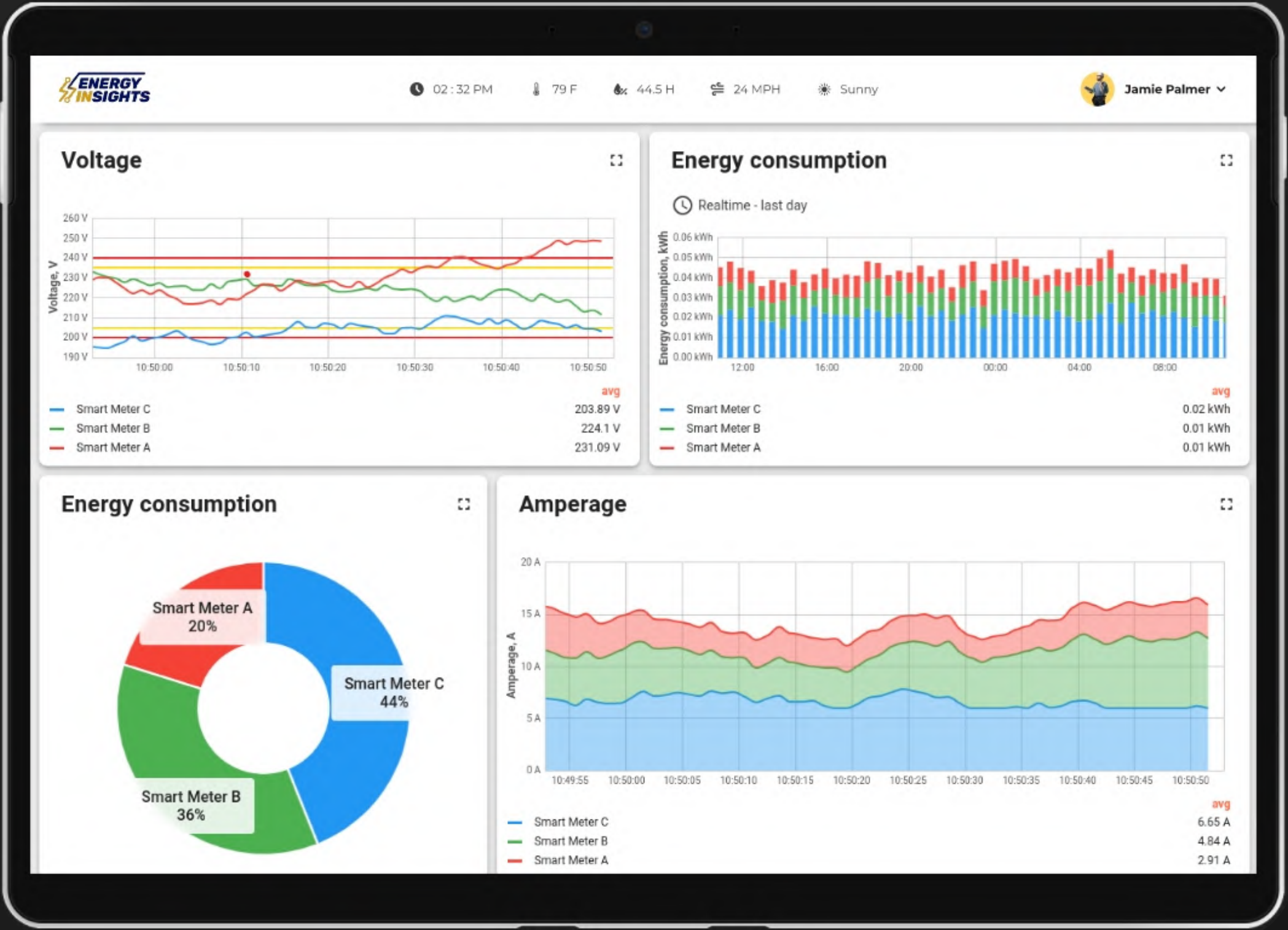


Hi! Remember Me?

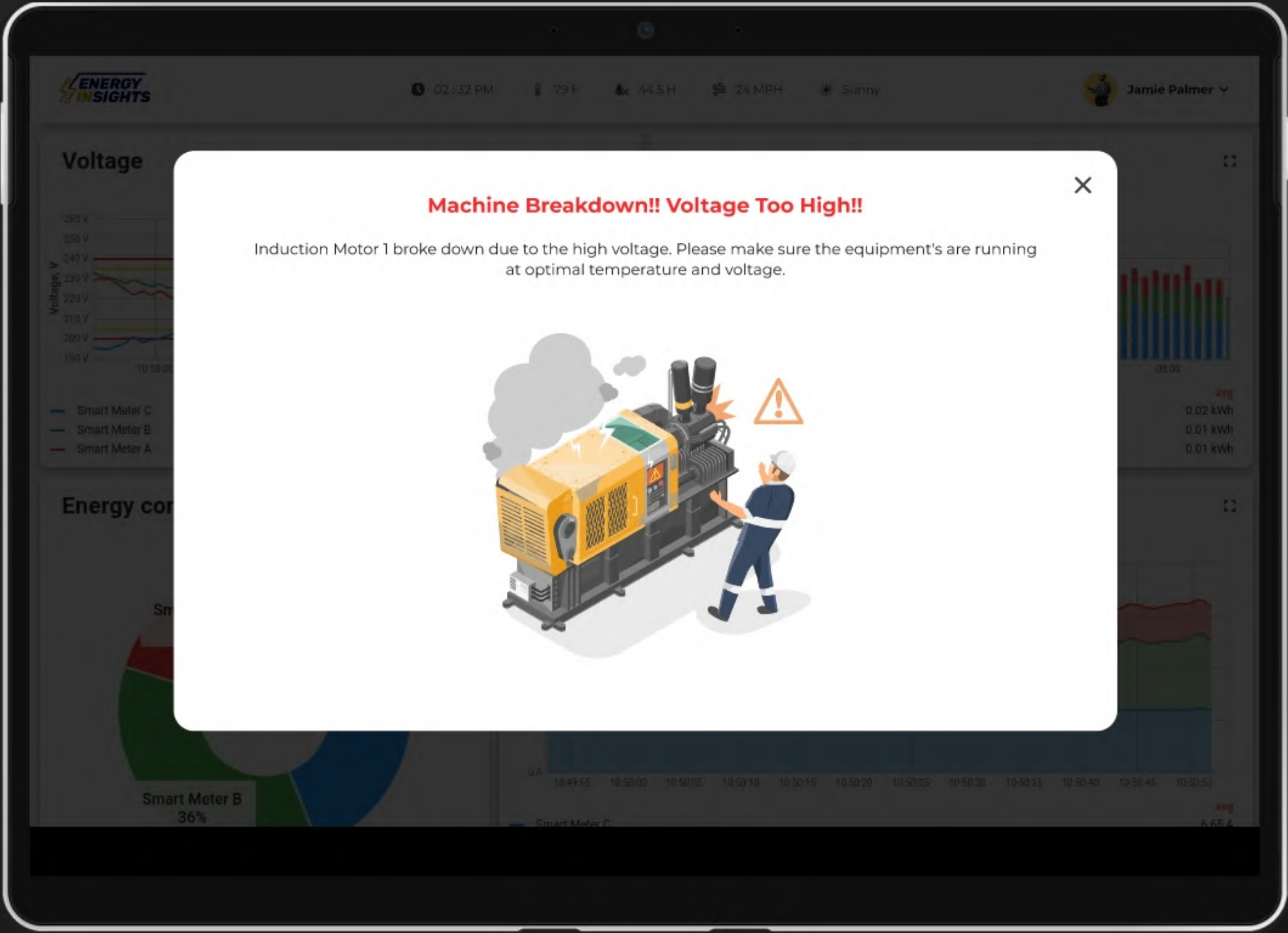
Jamie Palmer

Age : 32 Gender : Male Occupation: Operator

Existing Dashboard



Existing Dashboard



HOW WE GOT TO KNOW THE PROBLEM?



USER INTERVIEWS

"At the operator level, they should just be able to infer the information and make decisions."

— *Developer*

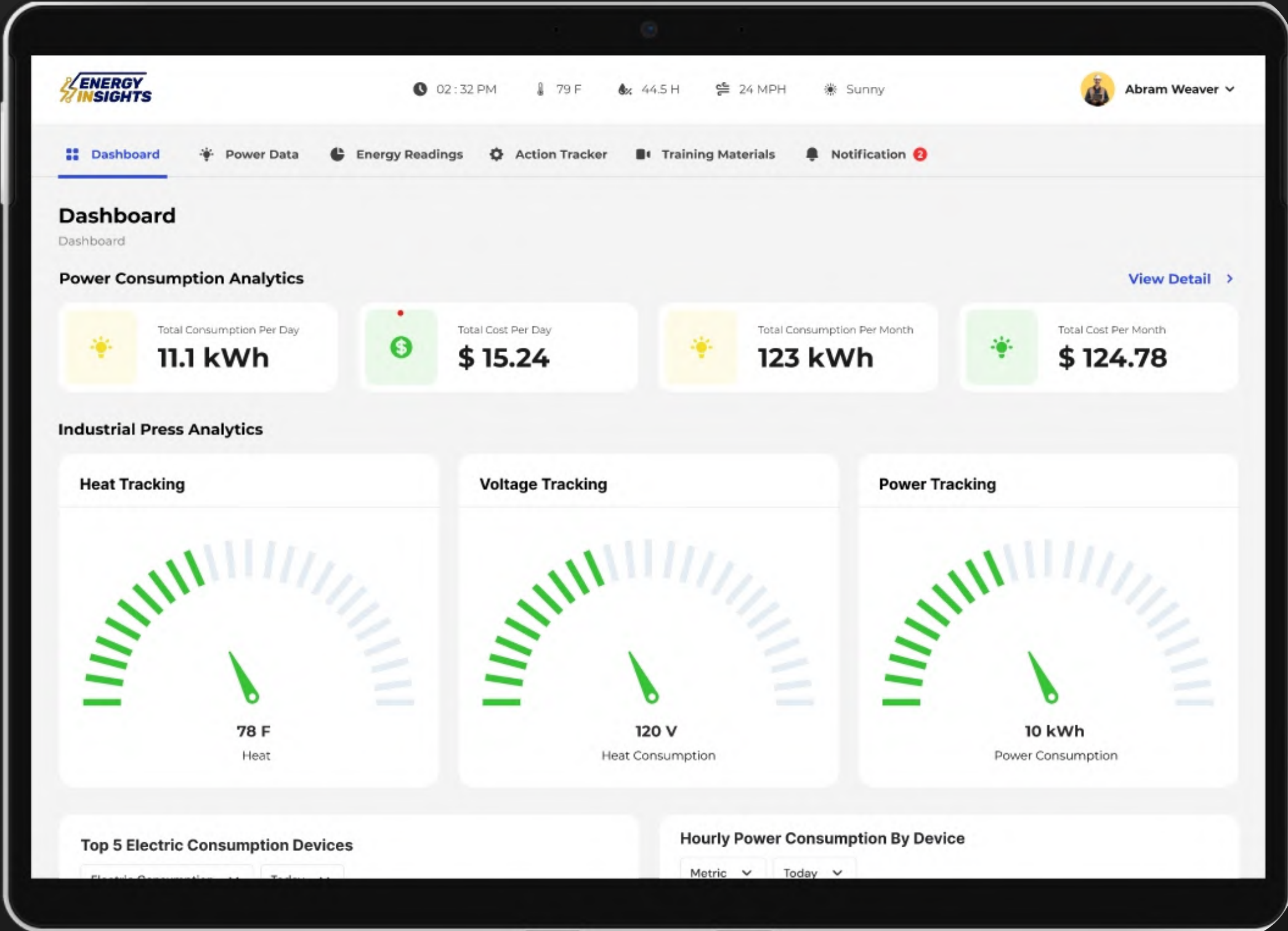
PROBLEM STATEMENT

How might we **empower** diverse **user groups** to make **informed** energy efficiency **decisions** and **actions** while minimizing **communication time** and **dependency**?

SOLUTION

Display issues along with visualization and **provide resolution steps** for operators to resolve the issues quickly and effectively.

Live Demo



Key Trends in IIoT

Edge Computing

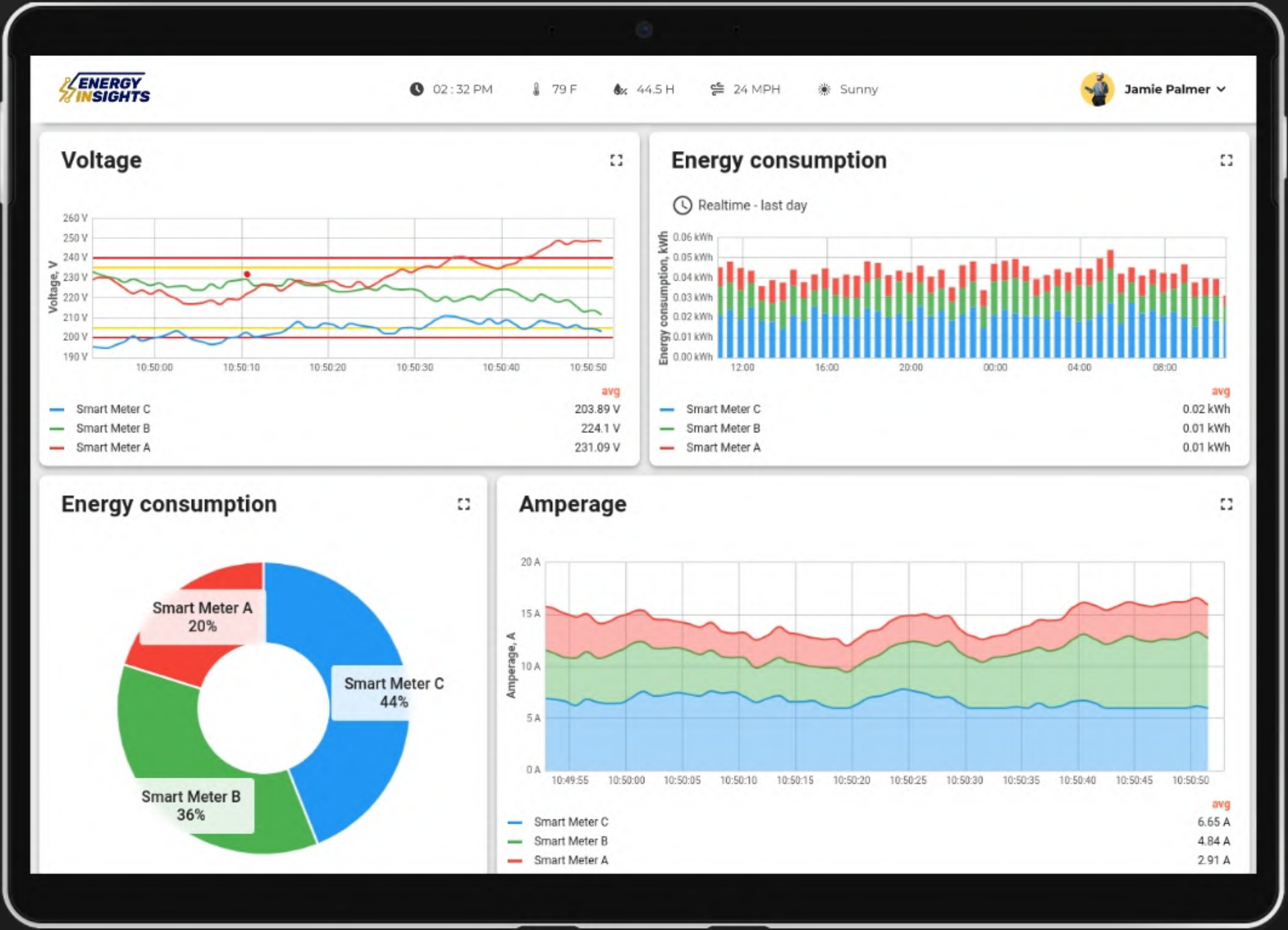
Trend in the Internet of Things (IoT) that brings **near real-time processing** to the IoT. It allows IoT devices to store, process, and analyze data **locally**, instead of sending it to a centralized server.



ADVANTAGES

- Reduced network latency
- Faster response times

Scenario 2



HOW WE GOT TO KNOW THE PROBLEM?



USER INTERVIEW INSIGHT

"So we kind of
cater that training based on client's requirement."

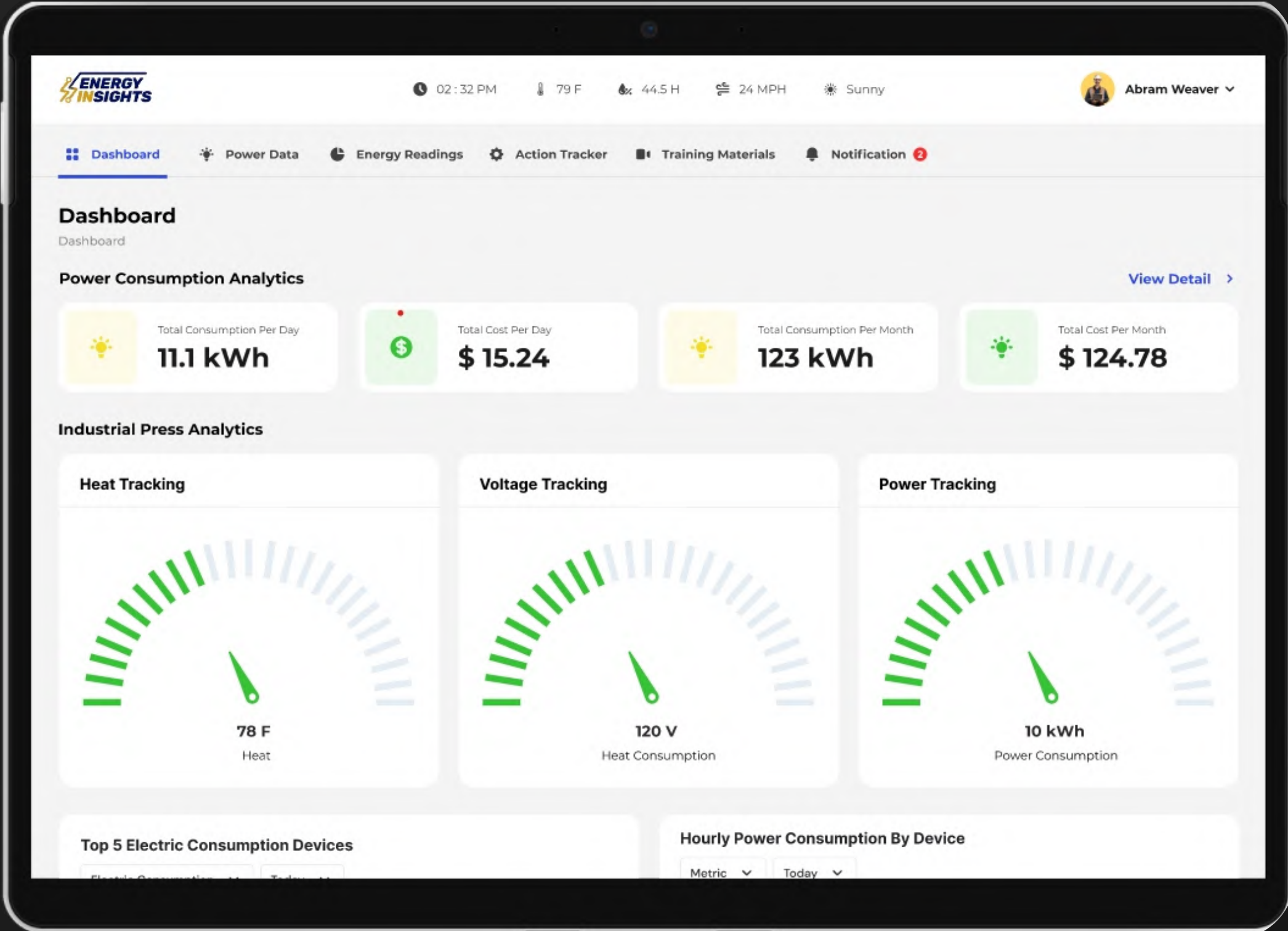
"So I think it's just gonna be making sure that it's easy to
understand, easy to continue on their own
and just really training them."

— *Integrator*

SOLUTION

**Provide access to training modules,
energy efficiency guides and resources.**

Solution



Gap in the market

PRODUCT FUNCTIONALITIES

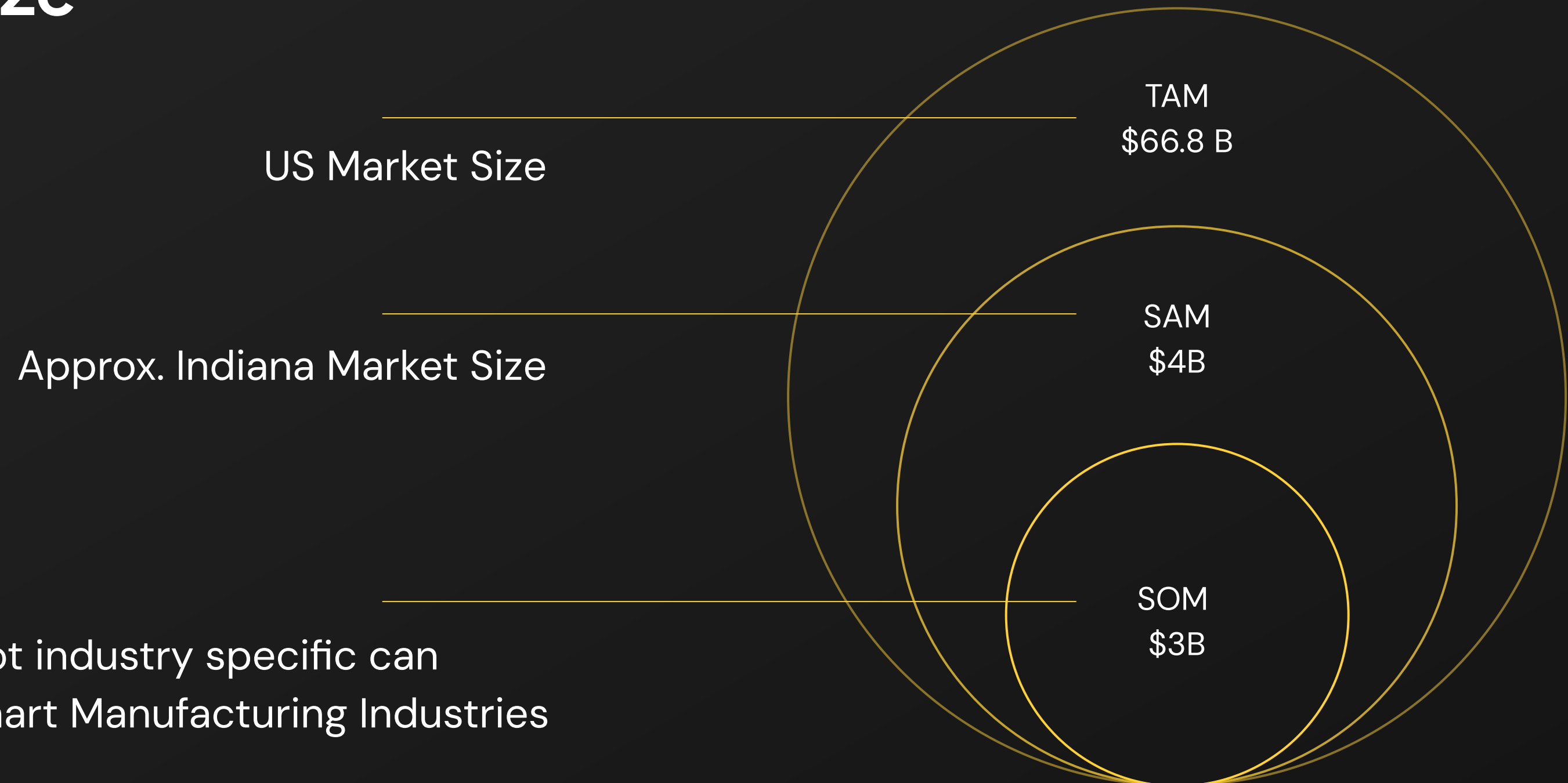
1. Monitoring and control
2. Data visualization
3. Alerts and notifications
4. Scheduling and automation

OPPURTUNITIES

- Integrated Training Modules
- Access to Energy Efficiency Guides and Resources

The logo for Schneider Electric, featuring the word "Schneider" in green and "Electric" in a smaller green font below it, with a green circular icon to the left of "Electric".The logo for Johnson Controls, featuring the words "Johnson Controls" in blue and a blue and green circular icon to the right.The logo for Honeywell, featuring the word "Honeywell" in red.The logo for SIEMENS, featuring the word "SIEMENS" in teal.

Smart Manufacturing Market Size



Our solution is not industry specific can cater to most Smart Manufacturing Industries

BUSINESS MODEL : FREEMIUM

Insight Essentials	Insight Pro	Insight Elite
Analytical tools for energy insights	All features of the Starter Package	All features of the Standard Package
Display of system errors and alerts	Enhanced error resolution steps with detailed guidance	Comprehensive training materials with video lessons
Limited access to historical data	Unlimited access to historical data	In-depth energy efficiency guides and use case scenarios
	Advance reporting capabilities	
Free	\$\$ / Month	\$\$ / Month

Cost structure

To generate content
for training materials

Drafting resolution
guides for most
common issues

Integrating analytical
tools in the system



Desirability



I really like the concept of showing possible solutions and what was done last time. The operators could easily read through it and understand what can be done. This could be a really useful feature.

-Integrator

The training module and guides are a good concept. We can come up with these content and reuse them when required.

- Sr. Operations Manager

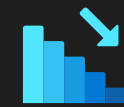
Technical Feasibility



“Manufacturing industries have Standard Operating Procedures which can be implemented in the system using databases and need not require AI implementation”

“Training modules can be easily Crafted and deployed in the system ”

Business Viability



REDUCES OPERATIONAL COSTS

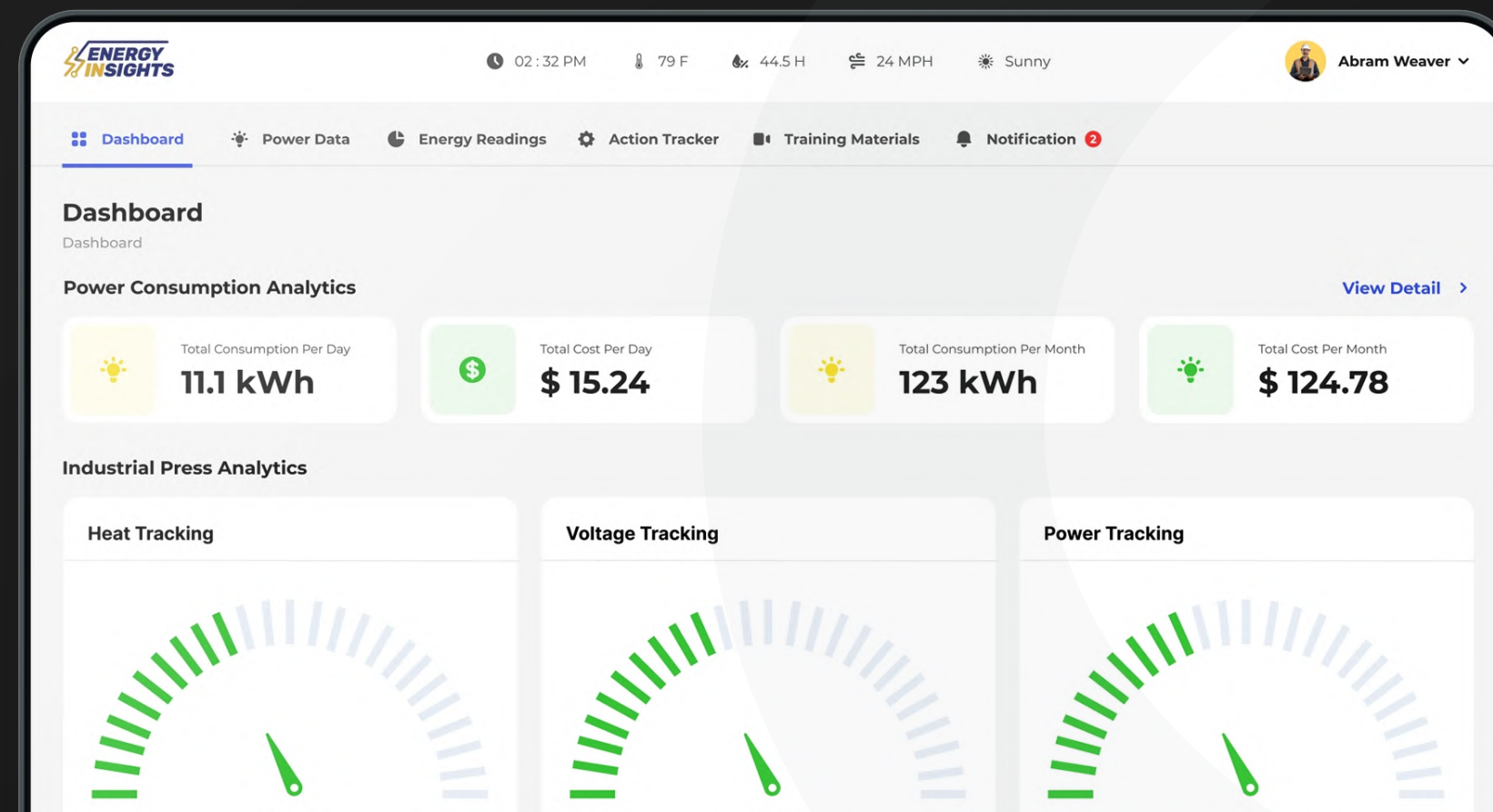
Less expenditure on training

Reduced spends in consultation

Team Alpha

Energy Insight Pitch Presentation

Samar | Sampada | Santhosh | Srithika





Thank you

Any Questions?



Pitch

Want to make a presentation like this one?

Start with a fully customizable template, create a beautiful deck in minutes, then easily share it with anyone.

Create a presentation (It's free)

